

ACE-890A/AP

86 W AC-DC Open Frame AT Power Supply

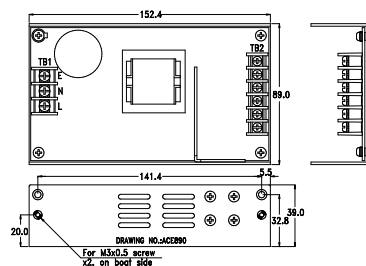
86W



PFC



Dimensions



Input Type	85 ~ 264 VAC Full Range (ACE-890A) 90 ~ 264 VAC Full Range (ACE-890AP-R20)				
Output Voltage	+5 V	+12 V	-5 V	-12 V	+24 V
ACE-890A	10 A	2.5 A		0.5 A	
ACE-890AP	10 A (3A min)	2.5 A (0.25A min)		0.5 A	
Efficiency	70 %				
Temperature	ACE-890A : 0°C ~ 50°C (Operating), -20°C ~ 85°C (Storage) ACE-890AP : 0°C ~ 50°C (Operating), -30°C ~ 70°C (Storage)				
MTBF(hrs)	268,000 (ACE-890A) , 300,000 (ACE-890AP)				
Output Connector	Optional Cable				
Dimensions	152.4 x 89 x 39 mm				

Optional 1	AC Input Solution PN: CB-643EC-RS 20 cm AC input cable with fuse
Optional 2	Embedded Solution PN: CB-643EB-RS 30 cm DC cable to CPU card, with 20-pin ATX, HDD and SATA connectors
Optional 3	ATX Backplane Solution PN: CB-890BP-RS 30 cm DC cable to backplane, with 20-pin ATX, HDD and SATA connectors
Optional 4	AT P8P9 Backplane Solution PN: CB-890P8P9-RS 30 cm DC cable AT power to P8P9, HDD and SATA connectors

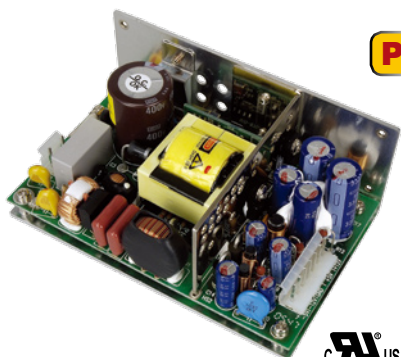
Ordering Information

Part No.	Description
ACE-890A-RS	86W AC-DC Open Frame AT Power Supply
ACE-890AP-R20-RS	86W AC-DC Open Frame AT Power Supply, with PFC

ACE-870A/AP

70 W AC-DC Open Frame AT Power Supply

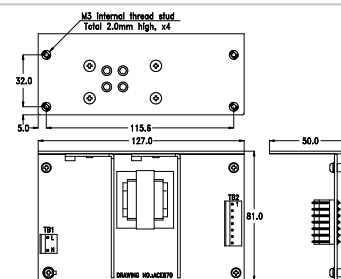
70W



PFC



Dimensions



Input Type	85 ~ 264VAC Full Range				
Output Voltage	+5V	+12V	-5V	-12V	+24V
	7A	2.5A	0.3A	0.3A	
Efficiency	70%				
Temperature	0°C ~ 50°C (Operating), -20°C ~ 85°C(Storage)				
MTBF(hrs)	296,000 (ACE-870A) , 238,000 (ACE-870AP)				
Output Connector	Optional Cable				
Dimensions	127 x 81 x 50 mm				

Optional 1	AC Input Solution PN: CB-870EC-RS 20 cm AC input cable with fuse
Optional 2	Embedded Solution PN: CB-870EB-RS 30 cm DC cable to CPU card, with 20-pin ATX, HDD and SATA connectors
Optional 3	ATX Backplane Solution PN: CB-870BP-RS 30 cm DC cable to backplane, with 20-pin ATX, HDD and SATA connectors
Optional 4	AT P8P9 Backplane Solution PN: CB-870P8P9-RS 30 cm DC cable AT power to P8P9, HDD and SATA connectors

Ordering Information

Part No.	Description
ACE-870A-RS	70W AC-DC Open Frame AT Power Supply
ACE-870AP-RS	70W AC-DC Open Frame AT Power Supply, with PFC

1 Industrial Computing Solutions

2 Embedded Computing Solutions

3 Industrial Data Collector and Controller

4 Video Capture Solutions

5 I/O Communication Solutions

6 Panel Solutions

7 ORing Network Communication

8 Power Supply/ Peripherals