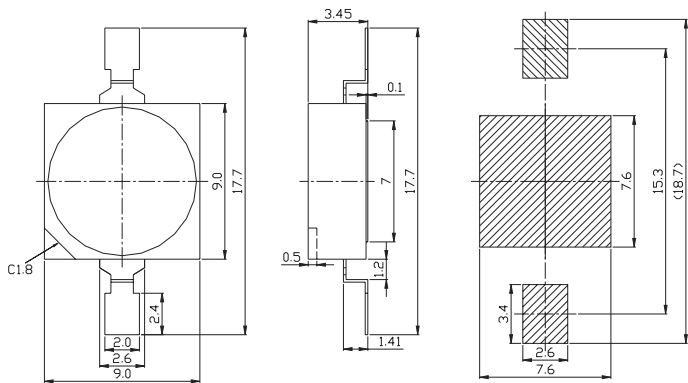


Device Selection Guide

Part Number	Color Temperature(K) @ $I_F = 350 \text{ mA}$			Total Luminous Flux $\Phi_V(\text{lm}) @ I_F = 350 \text{ mA}$		Forward Voltage $V_F @ I_F = 350 \text{ mA}$		Viewing Angle $2\theta_{1/2}$	Epoxy Color
	Min.	Typ.	Max.	Min.	Typ.	Typ.	Max.	Typ.	
EOH-SAMCB0	2850	3300	3800	10	15	3.3	3.8	110	Clear

- Notes: [1] Tolerance of total luminous flux measurement is $\pm 15\%$.
 [2] The test condition of the above specifications is under $I_F=350\text{mA}$, and the LED junction temperature is maintained at 25°C .
 [3] The viewing angle is for reference only.
 [4] A proper **heat sink** is required to attach LED.

Package Dimensions



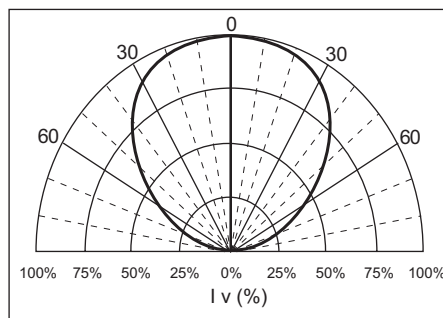
Recommended soldering pad



Notes:

- The cathode lead of the component is denoted by a chamfer shape on the top surface of plastic housing.
- All dimensions are in millimeters.
- All dimensions without tolerances are for reference only.

Beam Pattern



Head Quarter

8F, No.10, Li-Hsin Road, Science-Based Industrial Park,
Hsinchu, Taiwan, R.O.C
Tel : 886-3-5679000 Fax : 886-3-5679999
http://www.eoi.com.tw Service : Service@eoi.com.tw

US Office

1400 W. Lambert Road, Suite #B,
Brea, CA 92821, U.S.A
Tel : 562-694-1246 Fax : 562-691-3087
Service : Sales@eoius.com



Electrical / Optical Characteristics

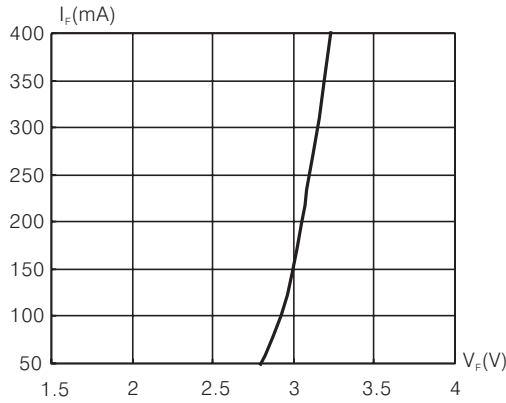


Fig.1 Forward Current vs. Forward Voltage

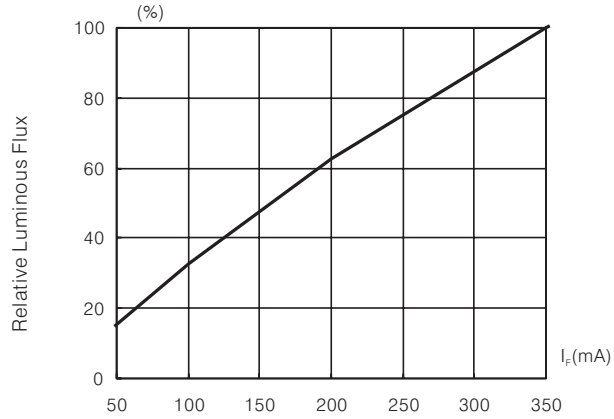


Fig.2 Luminous Flux vs. Forward Current

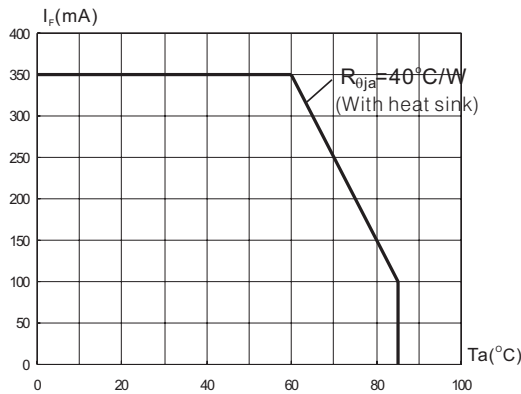


Fig.3 Allowable Forward Current vs. Ambient Temperature

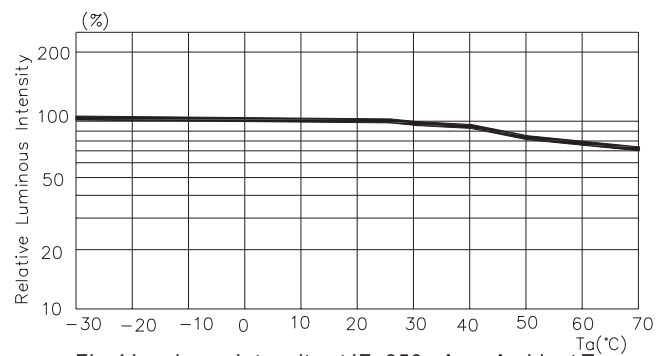


Fig.4 Luminous Intensity at I_F=350mA vs. Ambient Temperature

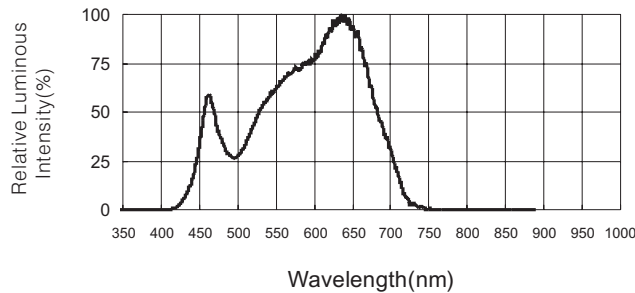


Fig.5. Relative Luminous Intensity vs. Wavelength

Absolute Maximum Ratings at T_A = 25°C

Parameter	Value	USER---APPROVED
DC Forward Current[1]	350mA	
Peak Pulsed Forward Current[1] (Duty Ratio = 1/10,Pulse Width = 10ms)	500mA	
Reverse Voltage (I _r =10μA)	>5V	
LED Junction Temperature	120°C	
Storage Temperature	-40°C to +100°C	

Notes: [1] The maximum forward current can be applied only at the condition that the LED Junction temperature is below the maximum. A proper **heat sink** is required to attach LED if the forward driving current is above 150mA.

[2] Please Contact our sales persons for further requirements of **heat sink** and thermal management.

Head Quarter

8F, No.10, Li-Hsin Road, Science-Based Industrial Park,
Hsinchu, Taiwan, R.O.C
Tel : 886-3-5679000 Fax : 886-3-5679999
http://www.eoi.com.tw Service : Service@eoi.com.tw

US Office

1400 W. Lambert Road, Suite #B,
Brea, CA 92821, U.S.A
Tel : 562-694-1246 Fax : 562-691-3087
Service : Sales@eoius.com

